

HURRICANE PRODUCT OVERVIEW

60 INDUSTRIAL ROAD,
BRADFORD ONTRARIO

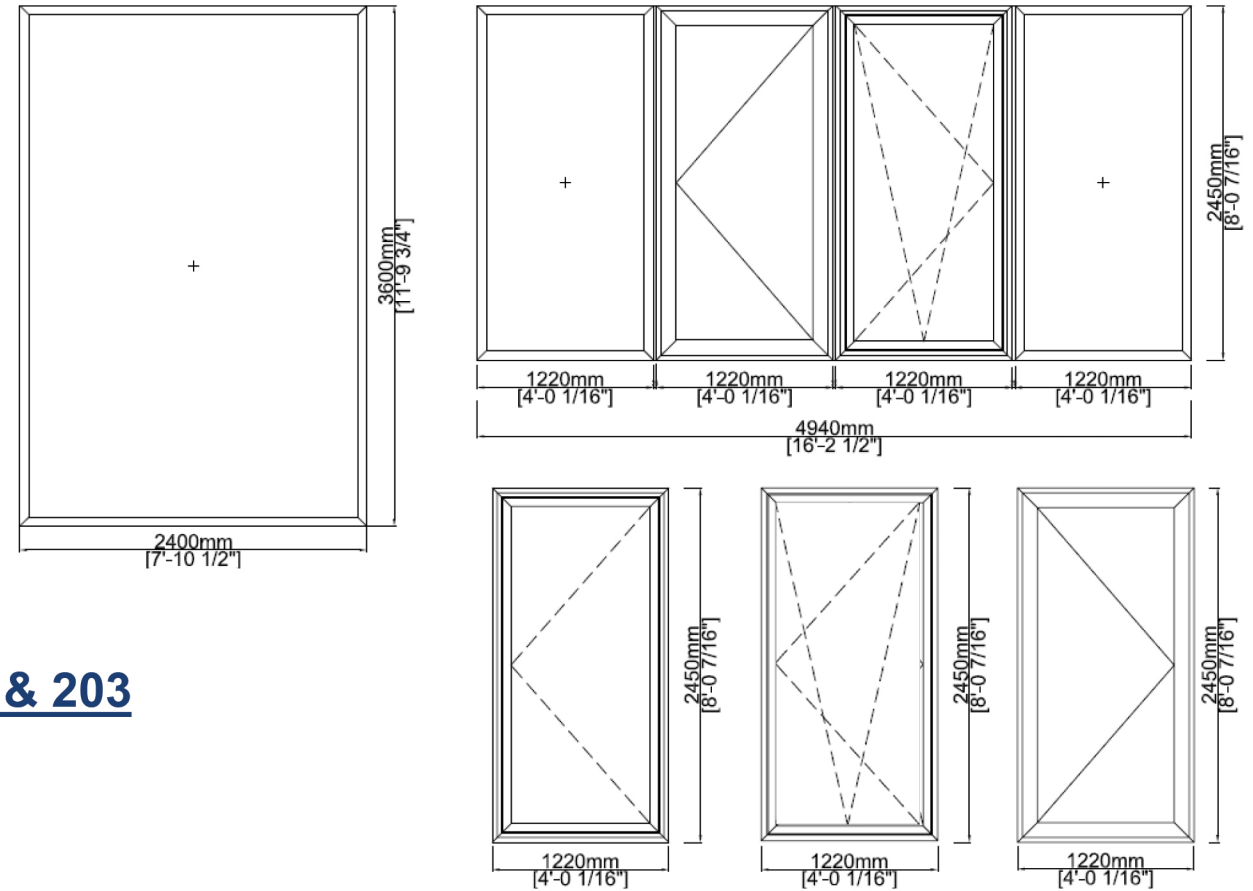
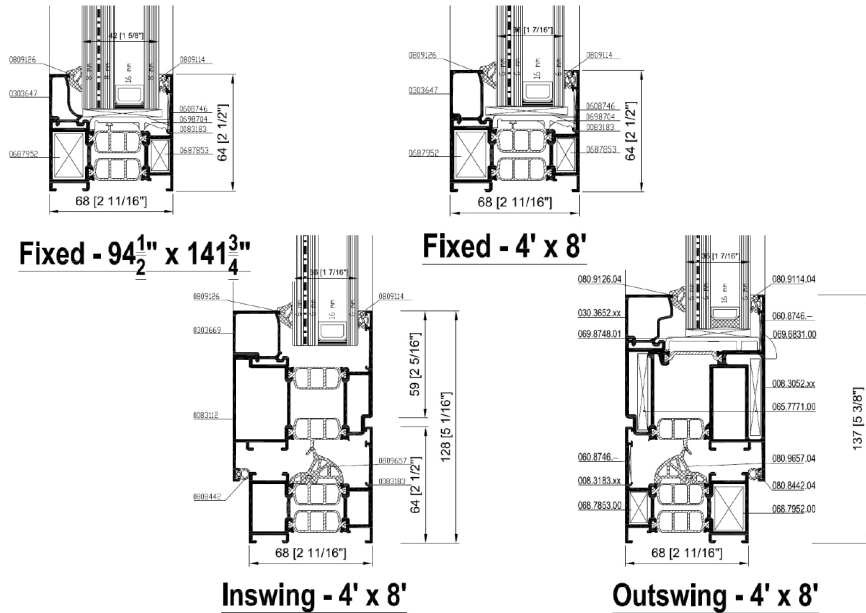


CS77 - Hurricane Solutions



4' x 8' [1220mm x 2450mm] fixed & operable [inswing & outswing], as well as 94½" x 141¾" [2400mm x 3600mm] fixed.

Couplers [Field Mulls] also approved



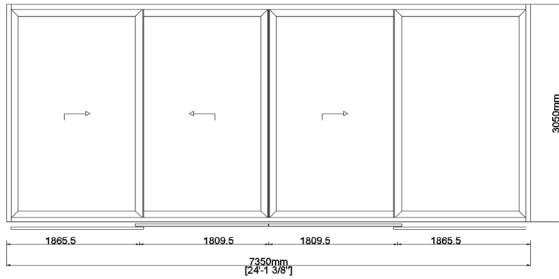
Tested to ASTM 1886/1996 & TAS 201, 202 & 203

- Water pressure: 12 psf (580Pa)
- Design pressure: 65 psf (3120 Pa)
- Structural pressure: 98 psf (4680 Pa)
- Missile: Large missile D

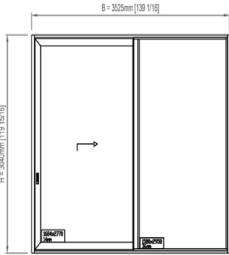
click here



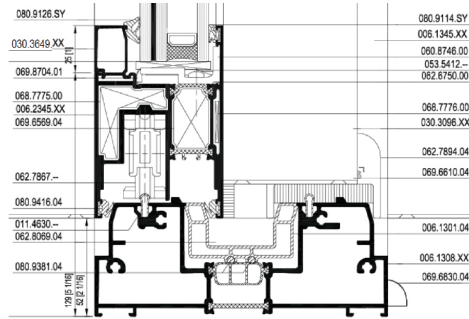
CP155LS - Hurricane



Multirail



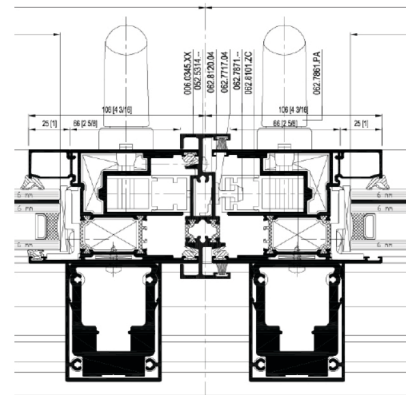
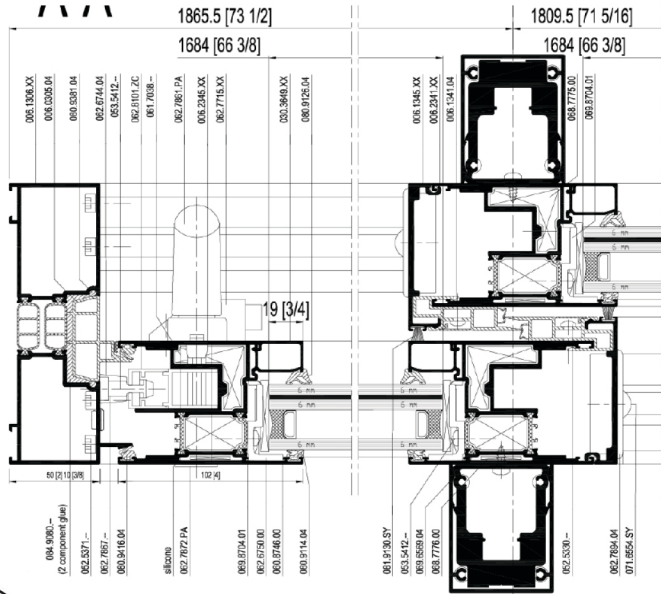
Monorail



Standard Threshold

Based on testing completed, we should be able to certify 1.5 times larger, therefore qualifying the following configurations containing up to max 6 leaves – Max Leaf Width = 73 3/8" & Max Frame Height = 10'

- QX & XQ & XX on 2 rail
- QXXQ & XXXX on 2 rail [bi-parting]
- QXX & XXQ & XXX on 3 rail
- QXXXXQ & XXXXXX on 3 rail [bi-parting]
- QXXX & XXXX on 4 rail
- QXXXX & XXXXX on 5 rail
- QXXXXX & XXXXXX on 6 rail
- QX monorail
- QXXQ monorail [bi-parting]
- As well as any other combination of above



Tested to TAS 201, 202 & 203

Water pressure: 12 psf (580Pa) [Monorail & 2 Rail]

Water pressure: 9.8 psf (470Pa) [3 Rail & above]

Design pressure: 65 psf (3120 Pa)

Structural pressure: 98 psf (4680 Pa)

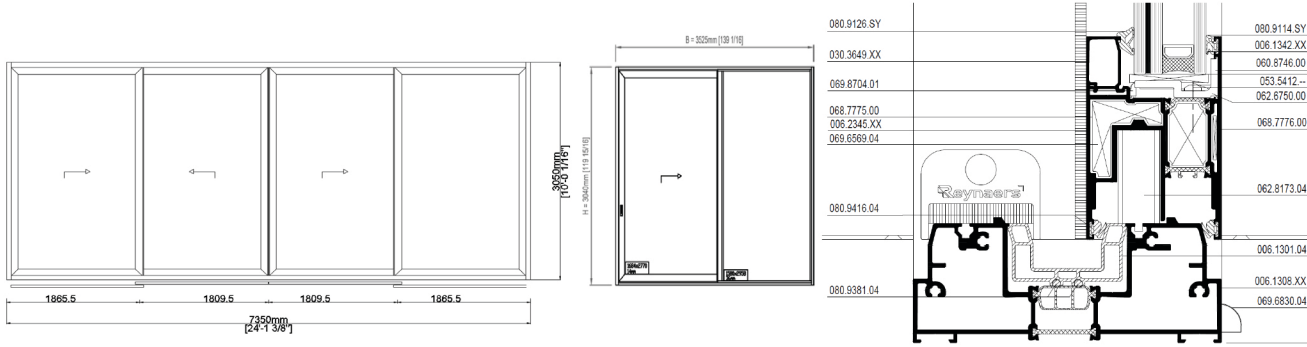
Missile: Large missile D



click here



CP155LS – HVHZ Approved



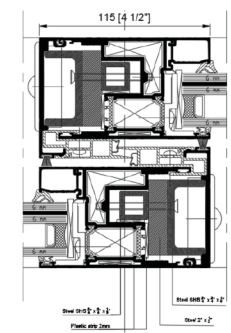
Multirail

Monorail

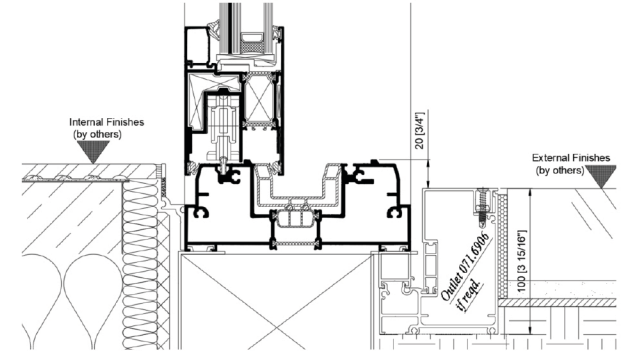
Standard Threshold

Based on testing completed, the system is approved for doors 1.5 times larger than tested, therefore qualifying configurations containing up to max 6 leaves

[Max DLO = 64 7/8" x 107 5/8"] [Max Frame Area = 373.16 sq ft]

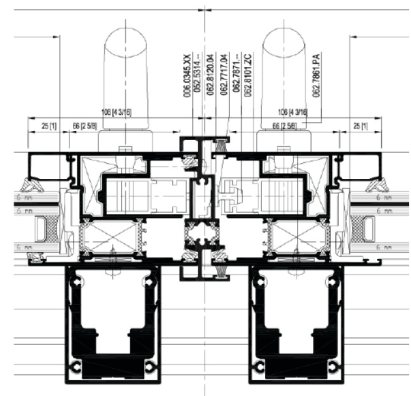
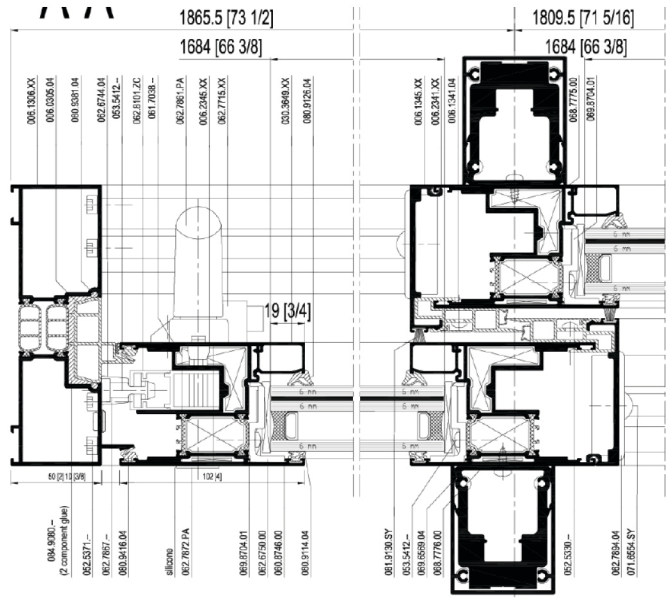


Optional internal steel reinforcement approved



Optional ADA threshold installation solution approved

Height from outside to inside $\leq 3/4"$



Tested to TAS 201, 202 & 203

Water pressure: 12 psf (580Pa) [Monorail & 2 Rail]

Water pressure: 9.8 psf (470Pa) [3 Rail & above]

Design pressure: 65 psf (3120 Pa)

Structural pressure: 98 psf (4680 Pa)

Missile: Large missile D



Glass Options

Double - 1/4" HS exterior - 5/8" cavity - 1/4"/090SGP/1/4" HS
 Single - 1/4"/090SGP/1/4" HS

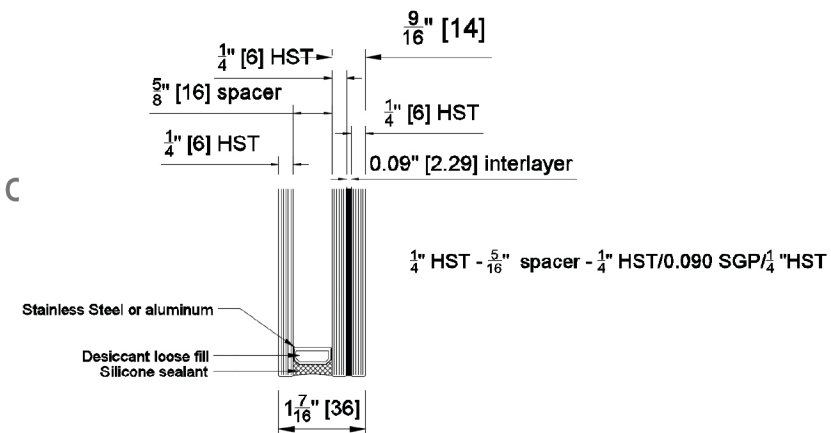


Impact Glass Specifications - HVHZ

4' x 8' windows

Laminated heat strengthened glass with SGP interlayer

Double Glazed - 1/4" Heat Strengthened or tempered exterior - 5/8" c
- 1/4"/090/1/4" Heat Strengthened interior

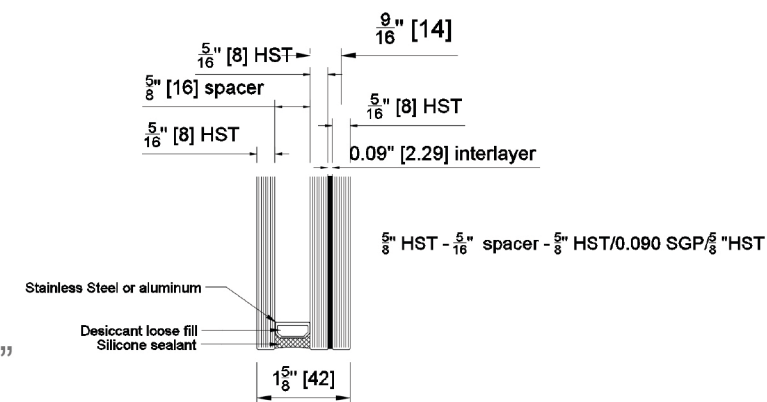


6' x 10' Lift Slide Doors

Laminated heat strengthened glass with SGP interlayer

Double Glazed - 1/4" Heat Strengthened or tempered exterior - 5/8" cavity
- 1/4"/090/1/4" Heat Strengthened interior

Single Glazed - 1/4"/090/1/4" Heat Strengthened



94 1/2" x 141 3/4" Fixed windows

Laminated heat strengthened glass with SGP interlayer

Double Glazed - 5/16" Heat Strengthened or tempered exterior - 5/8" cavity
- 5/16"/090/5/16" Heat Strengthened interior



FRAME OF MIND

TILTCO PLANT
60 Industrial Rd., Bradford,
ONTRARIO, L3Z 3G7
CANADA